

HCP PUMP

Model	80HDG25.5
Series	HDG
Frequency	50
Phase / Volt	3 Ø / 400 V
Rated Current	11.8 A
Discharge	80 mm (3")



Motor Data

Input Power—P1	7 kW
Rated Power—P2	5.5 kW
Insulation Class	H
Max. Starts Per Hour	5
Rated Speed (rpm)	2850
Start Method	DOL
Ingress Protection Code	IP68
Explosion-Proof	NO

Technology

Impeller Type	Open
Mechanical Seal	Double
Lubricating Oil VG32	850 CC
Solid Passage	10 mm (3/8")
Cooling Type	Self-cooling

Material

Motor Frame	FC200 (GG-20)
Shaft	SUS304 (X5CrNi18-10)
Casing	FC200 (GG-20)
Impeller	HiCrFC
Mechanical Seal	CA/CE&SiC/SiC
Cable	VCT,H07RN-F
Upper and Lower Bearing	6305ZZ,6308ZZ

Liquid

Maximum Ambient Temperature	0~40°C (32~104°F)
Maximum Installation Depth	20m (66ft)
Highest Liquid Temperature	40 °C (104°F)
Liquid Transported	Construction drainage

Others(Optional)

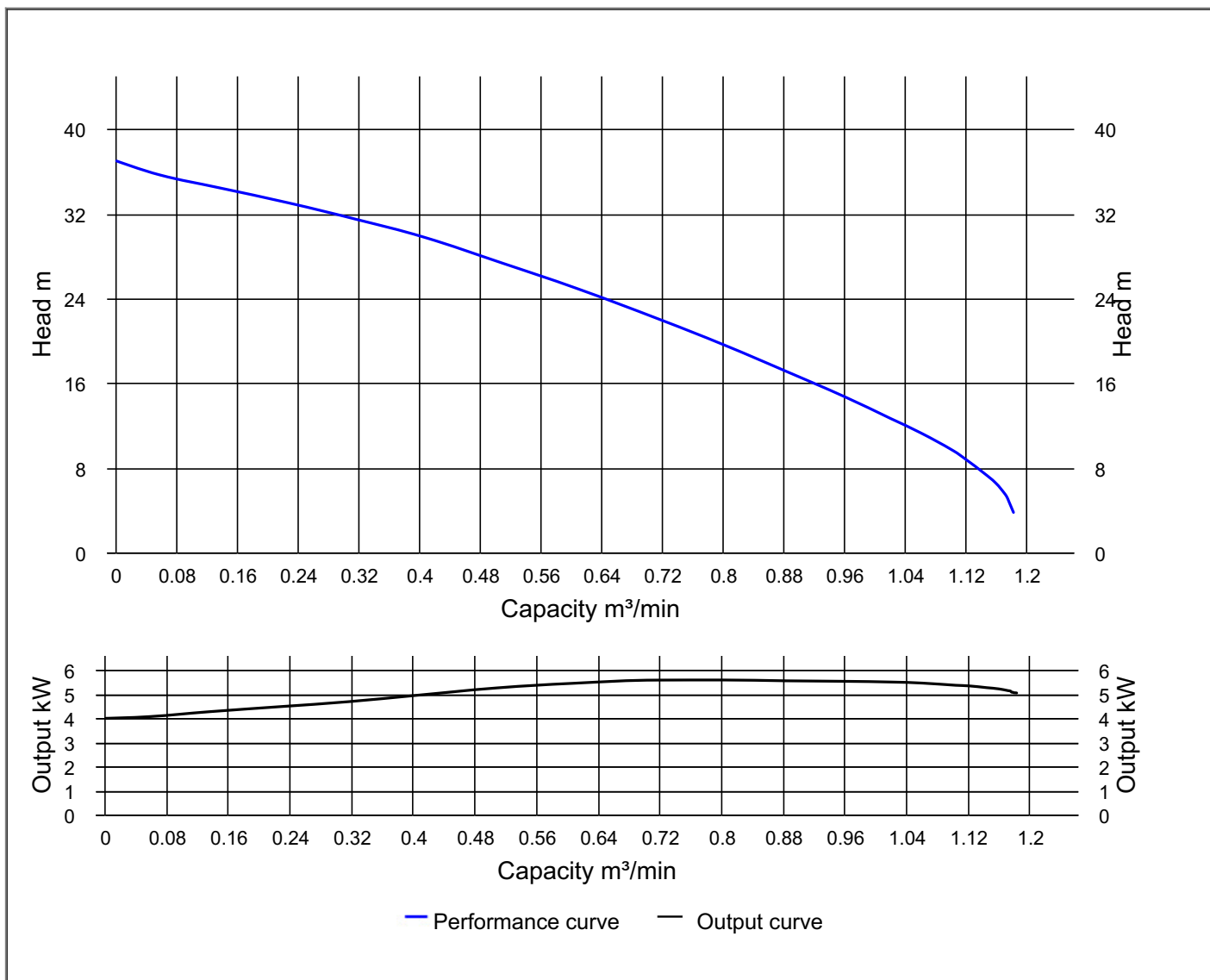
Protection Device	Auto-cut Protector
Moisture Sensor	



HCP PUMP

PUMP PERFORMANCE CURVES

Model	80HDG25.5	File NO.	20230217211724
Frequency	50 Hz	Ver NO.	202003060911
Discharge	3" / 80 mm	REFERENCE SPECIFICATION	
Output	7.5 HP / 5.5 kW	Output	5.25 kW
Std. Head	27 m	Efficiency	42.9 %
Std. Capacity	0.5 m ³ /min		
Phase / Volt	3 Ø / 400 V		
Rated Current	11.8 A		
Pole / rpm	2 P / 2850 rpm		
Start Method	DOL		
Insulation Class	H		

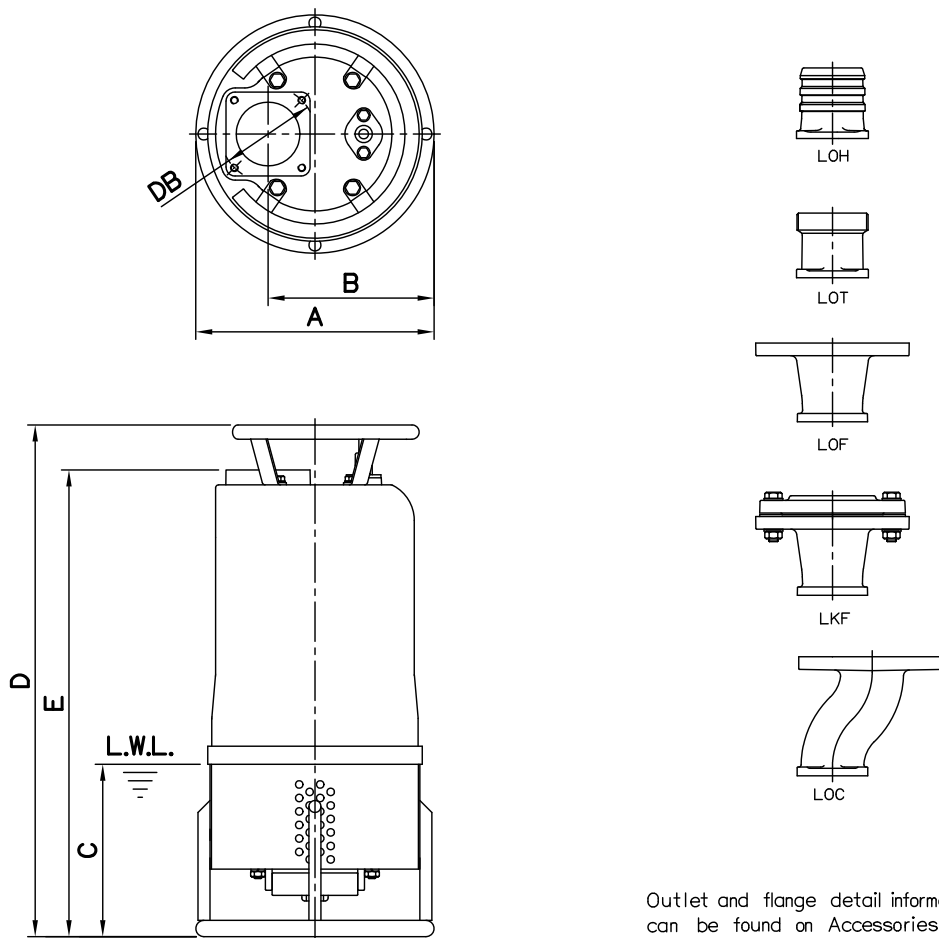


DIMENSIONS

NO: S6HDG275030-00

MODEL: 80HDG25.5 & 100HDG25.5 / 27.5 & 150HDG25.5 / 27.5

50Hz 3Ø



Outlet and flange detail information can be found on Accessories section.

Dimensions—mm

Weight:kg

Model	A	B	C	D	E	DB	WT1	Optional Outlet Accessories				
								LOH	LOT	LOF	LKF	LOC
80HDG25.5	318	221	200	683	623	127	73	LOH3-127	LOT3-127	LOF3-150-160*127	LKF3-150*127	LOC3-150*127
100HDG25.5	318	221	200	683	623	127	76	LOH4-127	LOT4-127	LOF4-175-190*127	LKF4-175*127	-
100HDG27.5	318	221	200	683	623	127	81	LOH4-127	LOT4-127	LOF4-175-190*127	LKF4-175*127	-
150HDG25.5	318	221	200	683	623	127	79	LOH6-127	LOT6-127	LOF6-240*127	LKF6-240*127	-
150HDG27.5	318	221	200	683	623	127	82	LOH6-127	LOT6-127	LOF6-240*127	LKF6-240*127	-

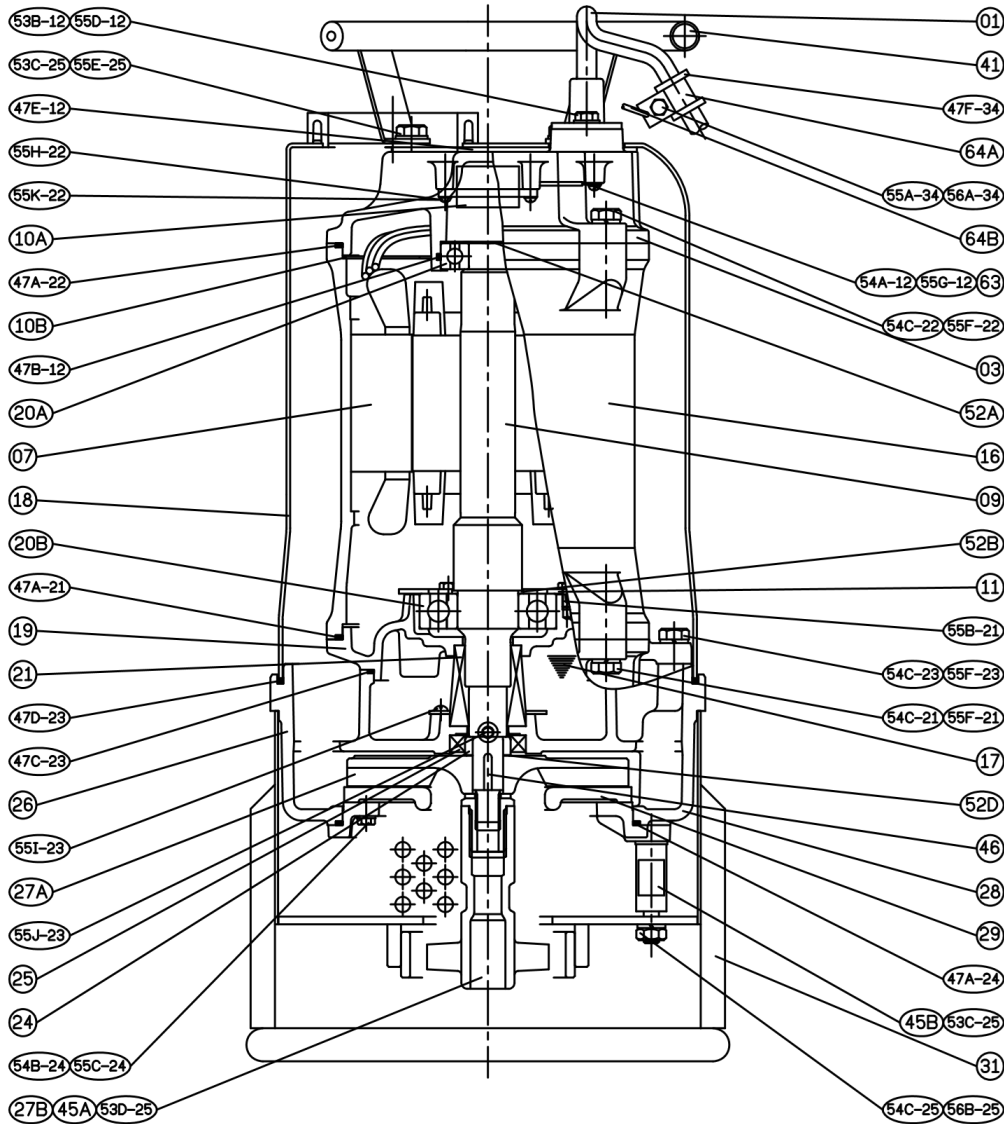
Dimensions—inch

Weight:lb

Model	A	B	C	D	E	DB	WT1	Optional Outlet Accessories				
								LOH	LOT	LOF	LKF	LOC
80HDG25.5	12½	8½ ₁₆	7¾	26⅞	24½	5	161	LOH3-127	LOT3-127	LOF3-150-160*127	LKF3-150*127	LOC3-150*127
100HDG25.5	12½	8½ ₁₆	7¾	26⅞	24½	5	168	LOH4-127	LOT4-127	LOF4-175-190*127	LKF4-175*127	-
100HDG27.5	12½	8½ ₁₆	7¾	26⅞	24½	5	179	LOH4-127	LOT4-127	LOF4-175-190*127	LKF4-175*127	-
150HDG25.5	12½	8½ ₁₆	7¾	26⅞	24½	5	174	LOH6-127	LOT6-127	LOF6-240*127	LKF6-240*127	-
150HDG27.5	12½	8½ ₁₆	7¾	26⅞	24½	5	181	LOH6-127	LOT6-127	LOF6-240*127	LKF6-240*127	-

L.W.L.:Lowest Running Water Level

WT1:Pump Weight(Without Cable)



NO.	Part name	Material	QTY
01	Cable		1
03	Upper Cover	FC200	1
07	Stator		1
09	Shaft End	SUS403	1
10A	Auto-cut Protector		1
10B	Protective Plate		1
11	Bearing Fixer	SPCC	1
16	Motor Frame	FC200	1
17	Lubricant		
18	Outer Cover	SUS304	1
19	Bearing Bracket	FC200	1
20A	Bearing		1
20B	Bearing		1
21	M. Seal	CA/CE & SiC/SiC	1

NO.	Part name	Material	QTY
24	Oil Seal Bush	SUS403	1
25	Oil Seal	SUS304+NBR	1
26	Casing	FC200	1
27A	Impeller	HiCrFC	1
27B	Agitator	FCD700	1
28	Casing Cover	FC200	1
29	Wear plate	HiCrFC	1
31	Strainer	SUS304	1
41	Handle	SUS304	1
46	Impeller Key	SUS304	1
47	Gasket Kit		