

# **HCP PUMP**

<b>Model</b>	<b>150HDG27.5</b>
<b>Series</b>	<b>HDG</b>
<b>Frequency</b>	<b>50</b>
<b>Phase / Volt</b>	<b>3 Ø / 400 V</b>
<b>Rated Current</b>	<b>15.8 A</b>
<b>Discharge</b>	<b>150 mm (6")</b>



## **Motor Data**

Input Power—P1	9.2 kW
Rated Power—P2	7.5 kW
Insulation Class	H
Max. Starts Per Hour	5
Rated Speed (rpm)	2850
Start Method	DOL
Ingress Protection Code	IP68
Explosion-Proof	NO

## **Technology**

Impeller Type	Close
Mechanical Seal	Double
Lubricating Oil VG32	850 CC
Solid Passage	10 mm (3/8")
Cooling Type	Self-cooling

## **Material**

Motor Frame	FC200 (GG-20)
Shaft	SUS304 (X5CrNi18-10)
Casing	FC200 (GG-20)
Impeller	HiCrFC
Mechanical Seal	CA/CE&SiC/SiC
Cable	VCT,H07RN-F
Upper and Lower Bearing	6305ZZ,6308ZZ

## **Liquid**

Maximum Ambient Temperature	0~40°C (32~104°F)
Maximum Installation Depth	20m (66ft)
Highest Liquid Temperature	40 °C (104°F)
Liquid Transported	Construction drainage

## **Others(Optional)**

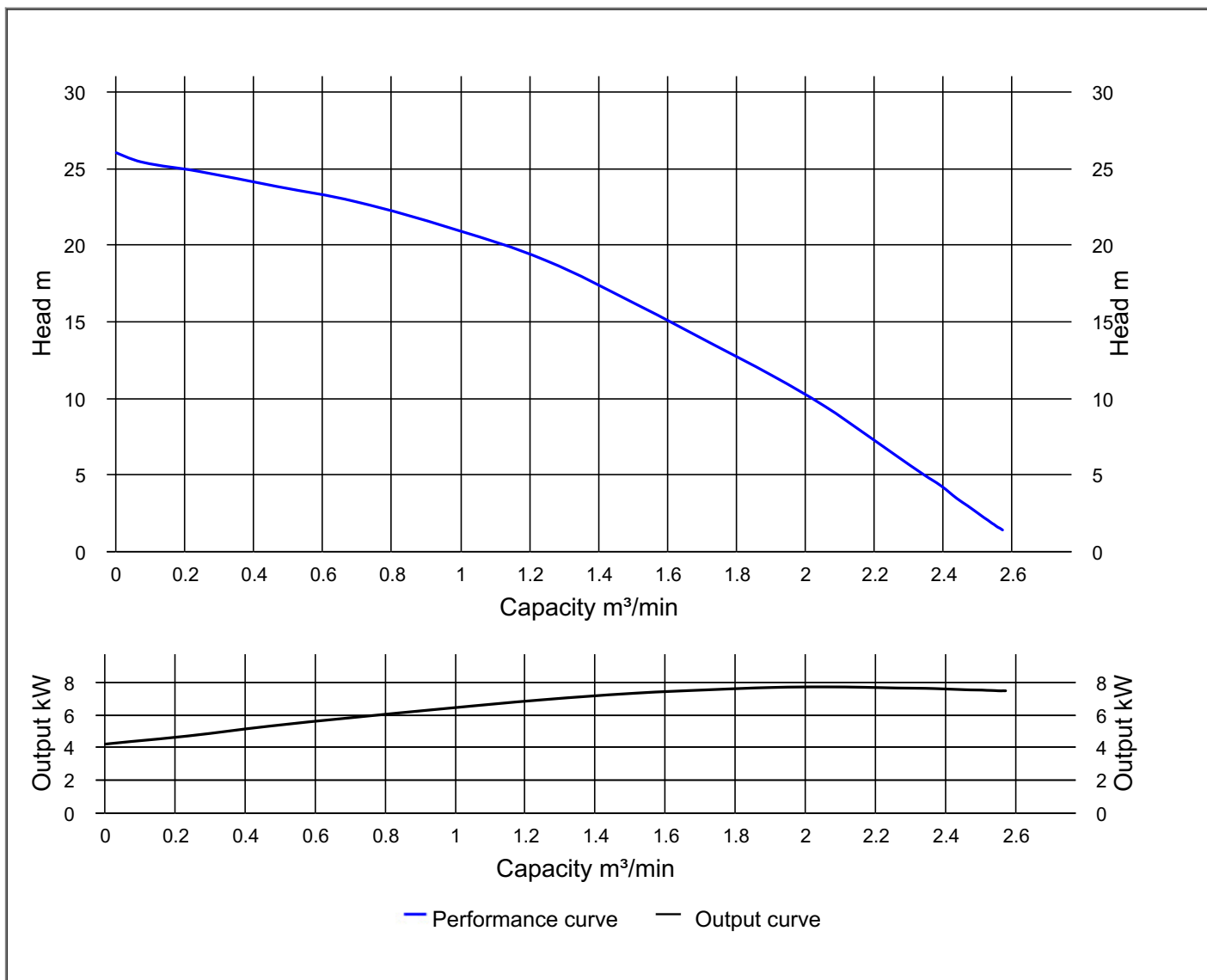
Protection Device	Auto-cut Protector
Moisture Sensor	



# HCP PUMP

## PUMP PERFORMANCE CURVES

Model	150HDG27.5	File NO.	20230217211853
Frequency	50 Hz	Ver NO.	202003060911
Discharge	6" / 150 mm	<b>REFERENCE SPECIFICATION</b>	
Output	10 HP / 7.5 kW	Output	7.28 kW
Std. Head	16 m	Efficiency	54.3 %
Std. Capacity	1.5 m <sup>3</sup> /min		
Phase / Volt	3 Ø / 400 V		
Rated Current	15.8 A		
Pole / rpm	2 P / 2850 rpm		
Start Method	DOL		
Insulation Class	H		

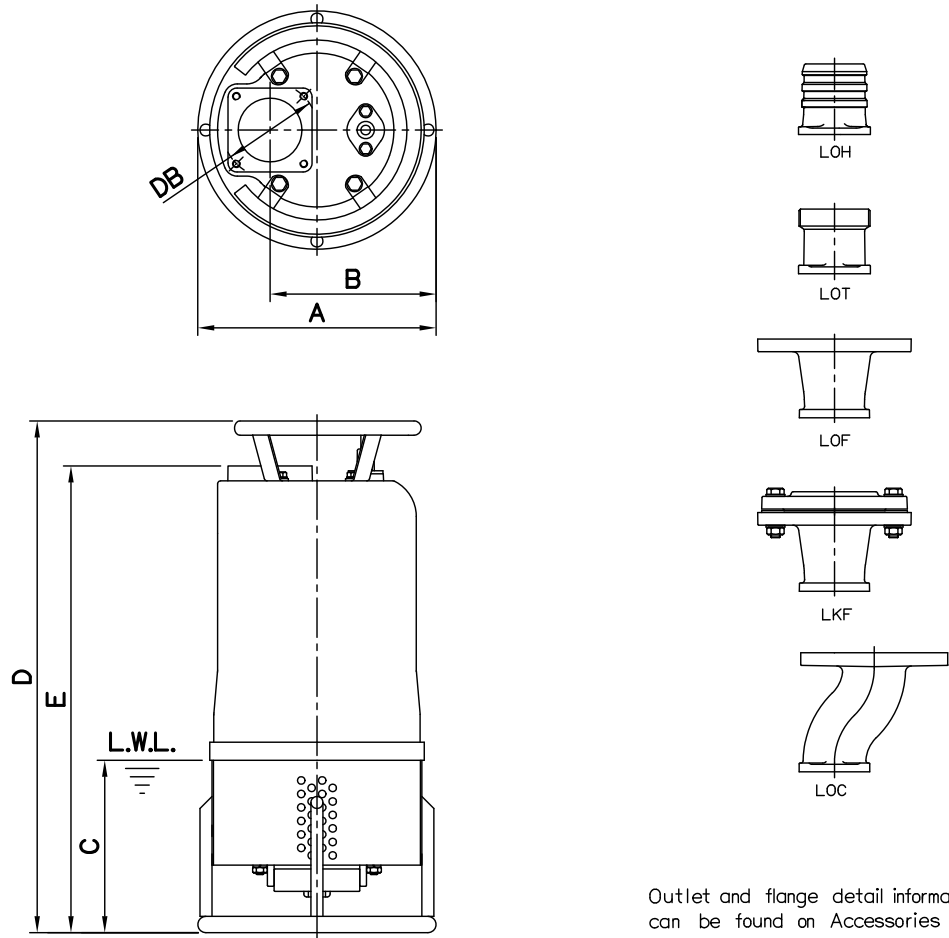


**DIMENSIONS**

**NO: S6HDG275030-00**

**MODEL: 80HDG25.5 & 100HDG25.5 / 27.5 & 150HDG25.5 / 27.5**

**50Hz 3Ø**



Outlet and flange detail information can be found on Accessories section.

Dimensions—mm

Weight:kg

Model	A	B	C	D	E	DB	WT1	Optional Outlet Accessories				
								LOH	LOT	LOF	LKF	LOC
80HDG25.5	318	221	200	683	623	127	73	LOH3-127	LOT3-127	LOF3-150-160*127	LKF3-150*127	LOC3-150*127
100HDG25.5	318	221	200	683	623	127	76	LOH4-127	LOT4-127	LOF4-175-190*127	LKF4-175*127	-
100HDG27.5	318	221	200	683	623	127	81	LOH4-127	LOT4-127	LOF4-175-190*127	LKF4-175*127	-
150HDG25.5	318	221	200	683	623	127	79	LOH6-127	LOT6-127	LOF6-240*127	LKF6-240*127	-
150HDG27.5	318	221	200	683	623	127	82	LOH6-127	LOT6-127	LOF6-240*127	LKF6-240*127	-

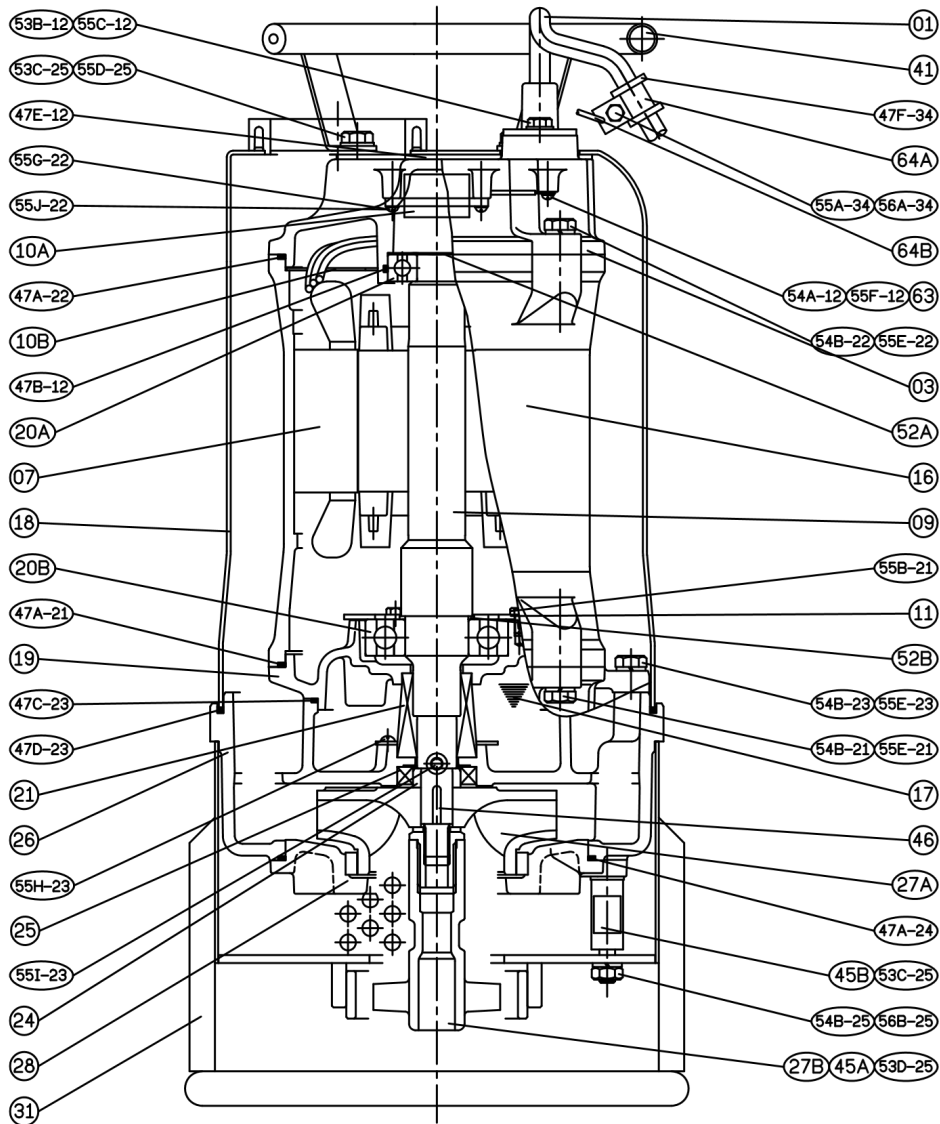
Dimensions—inch

Weight:lb

Model	A	B	C	D	E	DB	WT1	Optional Outlet Accessories				
								LOH	LOT	LOF	LKF	LOC
80HDG25.5	12½	8½ <sub>16</sub>	7¾	26¾	24½	5	161	LOH3-127	LOT3-127	LOF3-150-160*127	LKF3-150*127	LOC3-150*127
100HDG25.5	12½	8½ <sub>16</sub>	7¾	26¾	24½	5	168	LOH4-127	LOT4-127	LOF4-175-190*127	LKF4-175*127	-
100HDG27.5	12½	8½ <sub>16</sub>	7¾	26¾	24½	5	179	LOH4-127	LOT4-127	LOF4-175-190*127	LKF4-175*127	-
150HDG25.5	12½	8½ <sub>16</sub>	7¾	26¾	24½	5	174	LOH6-127	LOT6-127	LOF6-240*127	LKF6-240*127	-
150HDG27.5	12½	8½ <sub>16</sub>	7¾	26¾	24½	5	181	LOH6-127	LOT6-127	LOF6-240*127	LKF6-240*127	-

L.W.L.:Lowest Running Water Level

WT1:Pump Weight(Without Cable)



NO.	Part name	Material	QTY
01	Cable		1
03	Upper Cover	FC200	1
07	Stator		1
09	Shaft End	SUS304	1
10A	Auto-cut Protector		1
10B	Protective Plate		1
11	Bearing Fixer	SPCC	1
16	Motor Frame	FC200	1
17	Lubricant		
18	Outer Cover	SUS304	1
19	Bearing Bracket	FC200	1
20A	Bearing		1
20B	Bearing		1
21	M. Seal	CA/CE & SiC/SiC	1

NO.	Part name	Material	QTY
24	Oil Seal Bush	SUS403	1
25	Oil Seal	SUS304+NBR	1
26	Casing	FC200	1
27A	Impeller	HiCrFC	1
27B	Agitator	FCD700	1
28	Casing Cover+Wear Ring	FC200+HiCrFC	1
31	Strainer	SUS304	1
41	Handle	SUS304	1
46	Impeller Key	SUS304	1
47	Gasket Kit		