

HCP PUMP

Model	80SFU23.7
Series	SF
Frequency	50
Phase / Volt	3 Ø / 400 V
Rated Current	8.3 A
Discharge	80 mm (3")



Motor Data

Input Power—P1	4.6 kW
Rated Power—P2	3.7 kW
Insulation Class	F
Max. Starts Per Hour	10
Rated Speed (rpm)	2850
Start Method	DOL
Ingress Protection Code	IP68
Explosion-Proof	NO

Technology

Impeller Type	Vortex
Mechanical Seal	Double
Lubricating Oil VG32	1250 CC
Solid Passage	50 mm (2")
Cooling Type	External cooling

Material

Motor Frame	SUS316 (AISI 316)
Shaft	SUS316 (X5CrNiMo17-12-2)
Casing	SCS14 (G-X6CrNiMo1810)
Impeller	SCS14 (G-X6CrNiMo1810)
Mechanical Seal	CA/CE&SiC/SiC
Cable	VCT,H07RN-F
Upper and Lower Bearing	6304ZZ,6307ZZ

Liquid

Maximum Ambient Temperature	0~40°C (32~104°F)
Maximum Installation Depth	20m (66ft)
Highest Liquid Temperature	40 °C (104°F)
Liquid Transported	Acid and alkali sewage

Others(Optional)

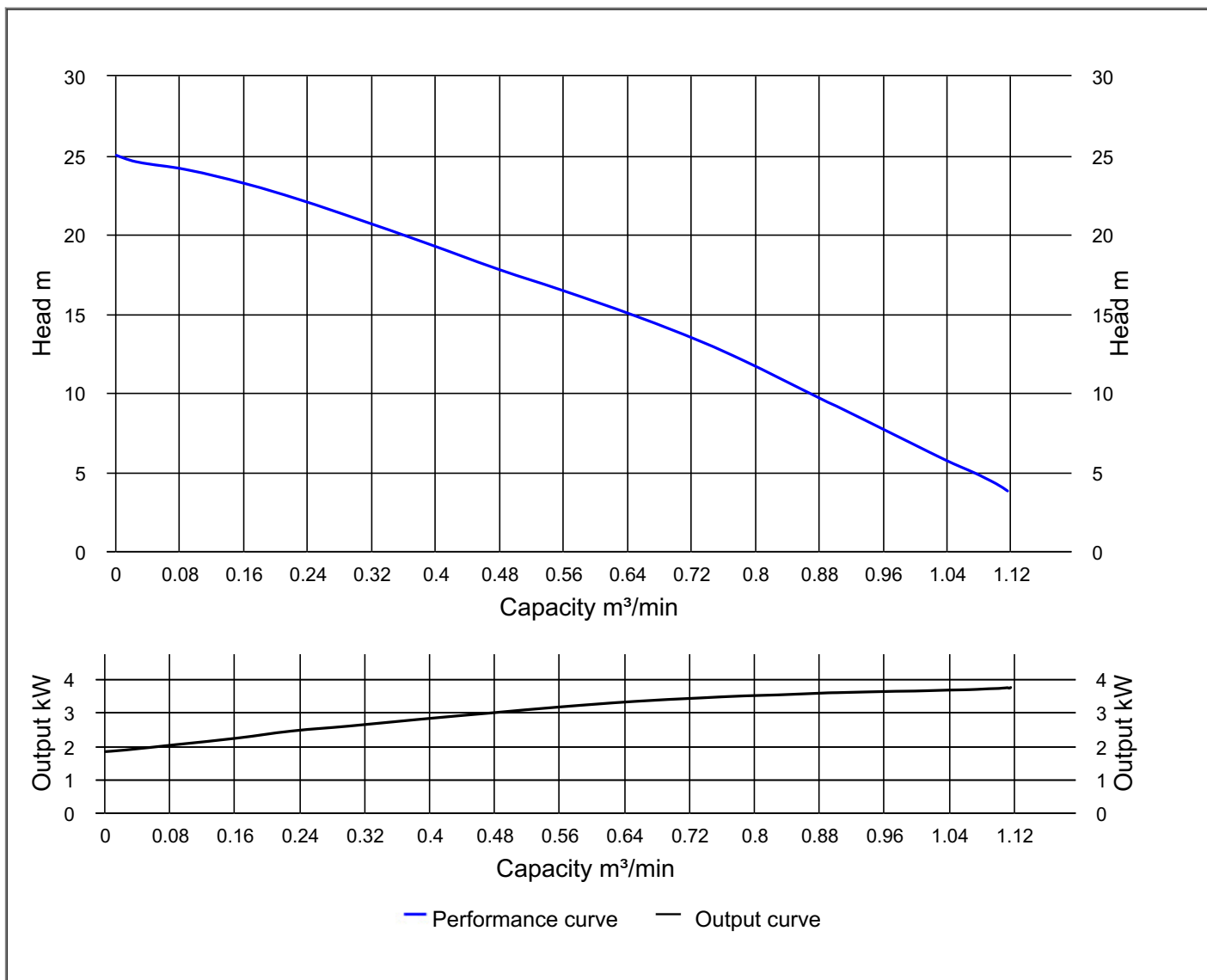
Protection Device	Auto-cut Protector
Moisture Sensor	



HCP PUMP

PUMP PERFORMANCE CURVES

Model	80SFU23.7	File NO.	20230124154755
Frequency	50 Hz	Ver NO.	202003060911
Discharge	3" / 80 mm	REFERENCE SPECIFICATION	
Output	5 HP / 3.7 kW	Output	3.05 kW
Std. Head	17.5 m	Efficiency	46.6 %
Std. Capacity	0.5 m ³ /min		
Phase / Volt	3 Ø / 400 V		
Rated Current	8.3 A		
Pole / rpm	2 P / 2850 rpm		
Start Method	DOL		
Insulation Class	F		

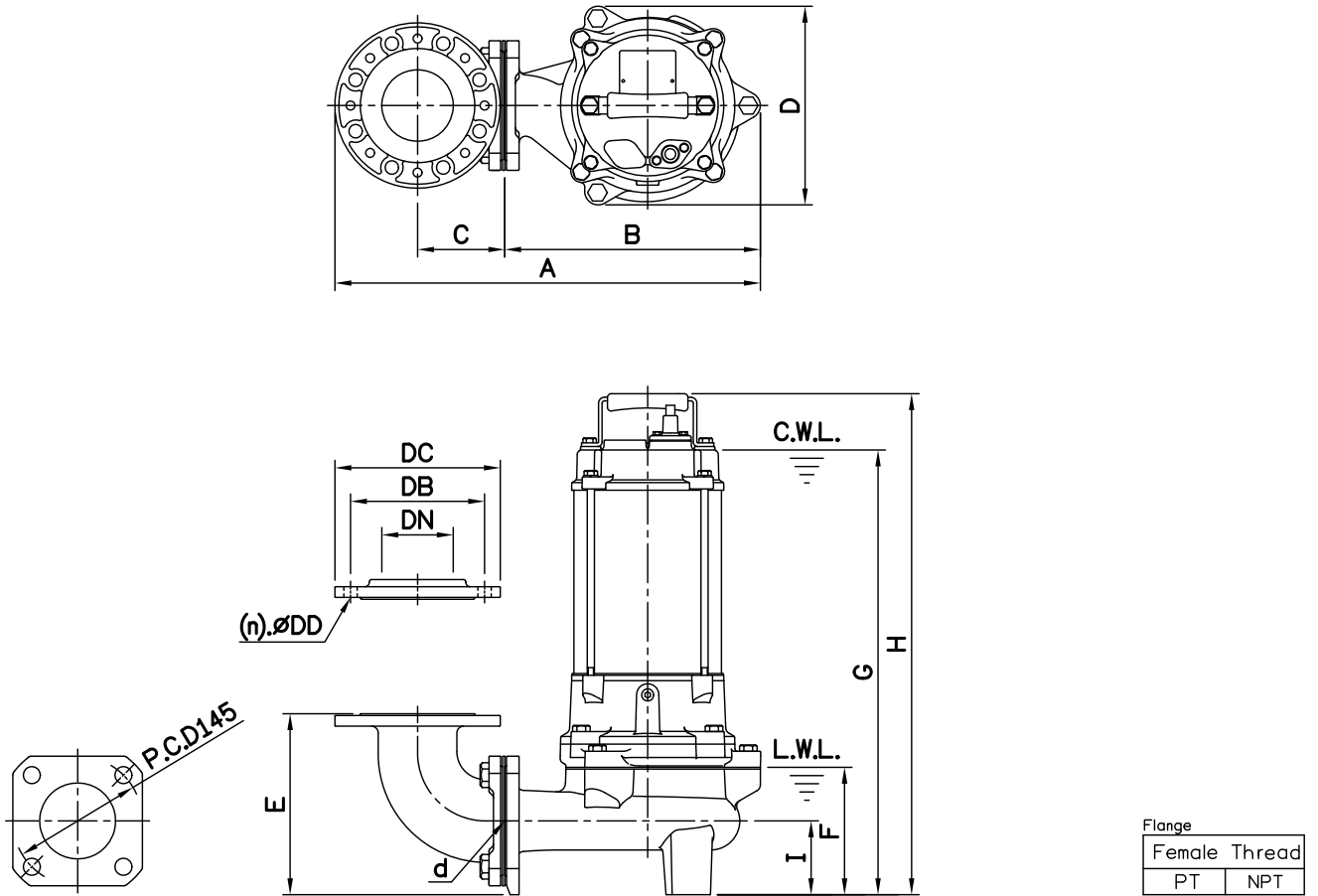


DIMENSIONS

NO: S3SFU237032-00

MODEL: 80SFU23.7

3Ø



Dimensions—mm

Weight:kg

Model	d	A	B	C	D	E	F	G	H	I	WT1	Elbow (Flange)Set	DN	DB	DC	DD	(n)QTY	WT2
80SFU23.7	80	476	286	98	222	203	143	498	561	83	40	ESB3-150K	80	150	185	15	8	7

Dimensions—inch

Weight:lb

Model	d	A	B	C	D	E	F	G	H	I	WT1	Elbow (Flange)Set	DN	DB	DC	DD	(n)QTY	WT2
80SFU23.7	3	18¾	11¼	3⅞	8¾	8	5⅝	19⅝	22⅞	3¼	88	ESB3-150K	3	5⅝	7⅝	⅝	8	16

C.W.L.:Continuous Running Water Level
L.W.L.:Lowest Running Water Level

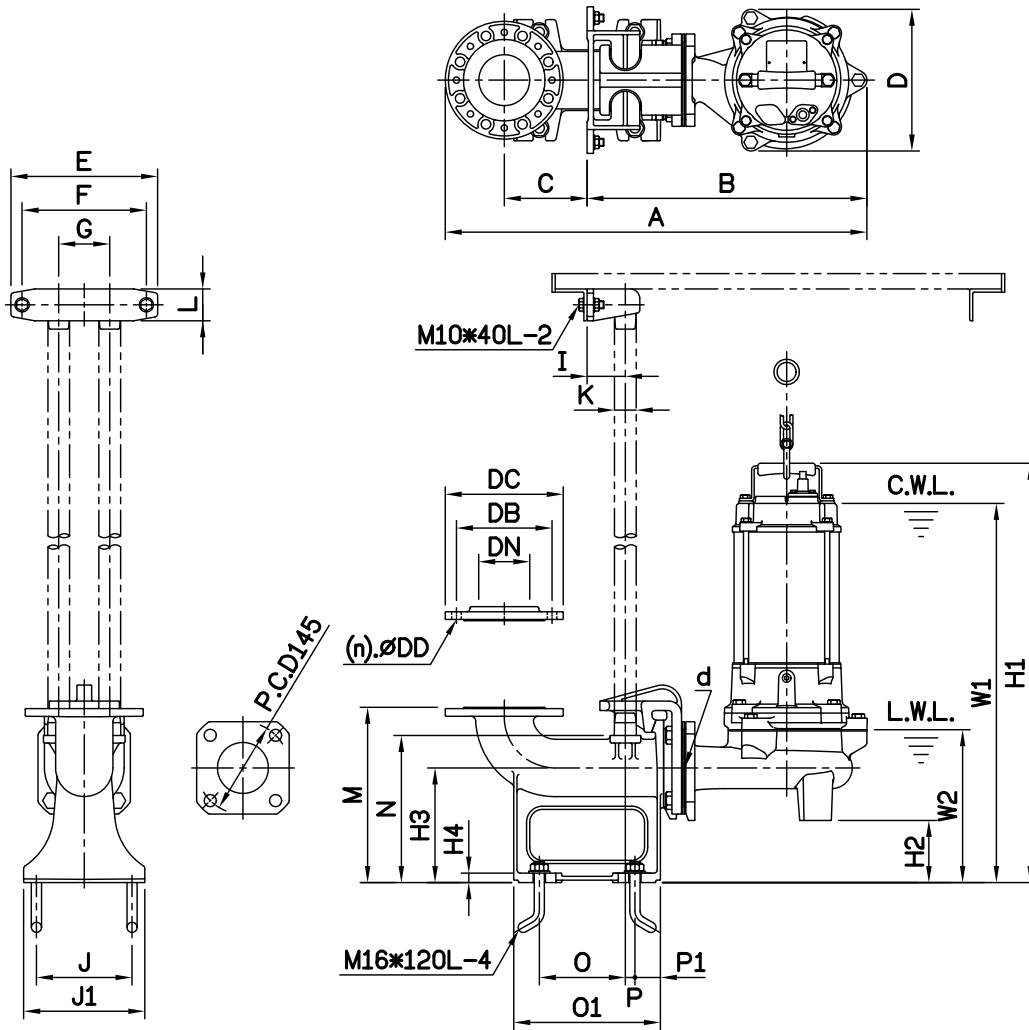
WT1:Pump Weight(Without Cable)
WT2:Elbow Set Weight

DIMENSIONS

NO: T3SFU237032-00

MODEL: 80SFU23.7

3Ø



Flange	
Female Thread	
PT	NPT

Dimensions-mm

Elbow (Flange)Set	DN	DB	DC	DD	(n)QTY
ESF3-150	80	150	185	15	8

Dimensions-inch

Elbow (Flange)Set	DN	DB	DC	DD	(n)QTY
ESF3-150	3	5 ⁷ / ₁₆	7 ⁵ / ₁₆	⁹ / ₁₆	8

Dimensions-mm

Model	d	A	B	C	D	E	F	G	I	J	J1	K	L	M	N	O	O1	P	P1	W1	W2	H1	H2	H3	H4	WT1	Weight:kg	
																											GRS Set	WT2
80SFU23.7	80	662	439	130	222	230	195	80	60	150	190	1 ¹ / ₄	50	275	231	135	230	15	40	595	240	658	98	180	15	40	ST80D	22

Dimensions-inch

Model	d	A	B	C	D	E	F	G	I	J	J1	K	L	M	N	O	O1	P	P1	W1	W2	H1	H2	H3	H4	WT1	Weight:lb	
																											GRS Set	WT2
80SFU23.7	3	26 ¹ / ₁₆	17 ³ / ₁₆	5 ¹ / ₈	8 ³ / ₈	9 ¹ / ₁₆	7 ¹ / ₁₆	3 ¹ / ₈	2 ³ / ₈	5 ³ / ₁₆	7 ¹ / ₂	1 ¹ / ₄	2	10 ¹ / ₁₆	9 ¹ / ₁₆	5 ¹ / ₁₆	9 ¹ / ₁₆	⁹ / ₁₆	1 ¹ / ₁₆	23 ³ / ₁₆	9 ¹ / ₁₆	25 ⁷ / ₁₆	3 ⁷ / ₈	7 ¹ / ₁₆	⁹ / ₁₆	88	ST80D	49

C.W.L.:Continuous Running Water Level
L.W.L.:Lowest Running Water Level

WT1:Pump Weight(Without Cable)
WT2:GRS Set Weight

