

# **HCP PUMP**

<b>Model</b>	<b>50SFU2.8A</b>
<b>Series</b>	<b>SF</b>
<b>Frequency</b>	<b>50</b>
<b>Phase / Volt</b>	<b>3 Ø / 400 V</b>
<b>Rated Current</b>	<b>1.9 A</b>
<b>Discharge</b>	<b>50 mm (2")</b>



## **Motor Data**

Input Power—P1	1.05 kW
Rated Power—P2	0.75 kW
Insulation Class	B
Max. Starts Per Hour	10
Rated Speed (rpm)	2800
Start Method	DOL
Ingress Protection Code	IP68
Explosion-Proof	NO

## **Technology**

Impeller Type	Vortex
Mechanical Seal	Double
Lubricating Oil VG32	340 CC
Solid Passage	35 mm (1 <sup>3</sup> / <sub>8</sub> " )
Cooling Type	External cooling

## **Material**

Motor Frame	SUS316 (AISI 316)
Shaft	SUS316 (X5CrNiMo17-12-2)
Casing	SCS14 (G-X6CrNiMo1810)
Impeller	SCS14 (G-X6CrNiMo1810)
Mechanical Seal	CA/CE&SiC/SiC
Cable	VCT,H07RN-F
Upper and Lower Bearing	6202ZZ,6303ZZ

## **Liquid**

Maximum Ambient Temperature	0~40°C (32~104°F)
Maximum Installation Depth	10m (33ft)
Highest Liquid Temperature	40 °C (104°F)
Liquid Transported	Acid and alkali sewage

## **Others(Optional)**

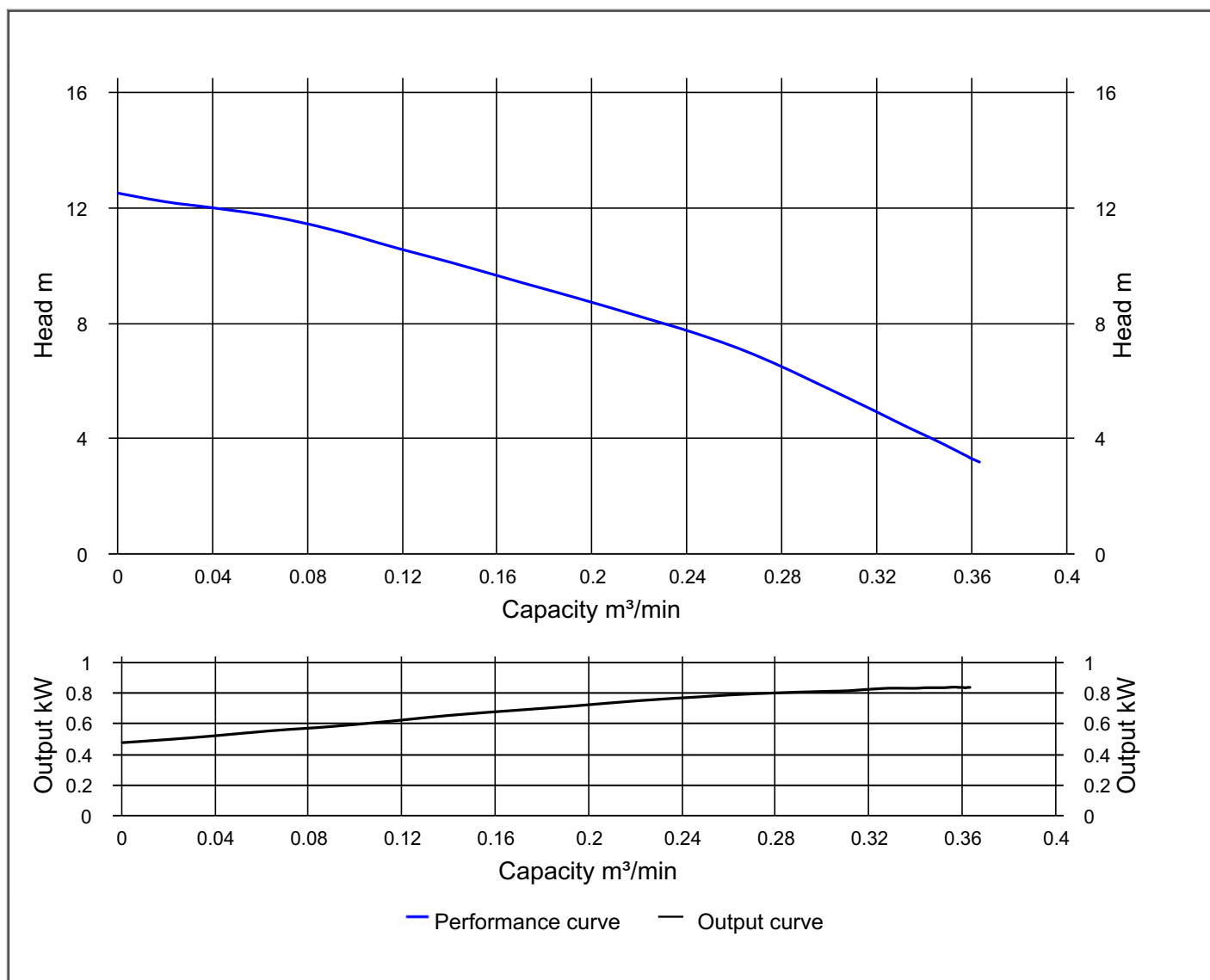
Protection Device	Auto-cut Protector
Moisture Sensor	



# HCP PUMP

## PUMP PERFORMANCE CURVES

Model	50SFU2.8A	File NO.	20230124154319
Frequency	50 Hz	Ver NO.	202003060911
Discharge	2" / 50 mm	<b>REFERENCE SPECIFICATION</b>	
Output	1 HP / 0.75 kW	Output	0.73 kW
Std. Head	8 m	Efficiency	39.4 %
Std. Capacity	0.2 m <sup>3</sup> /min		
Phase / Volt	3 Ø / 400 V		
Rated Current	1.9 A		
Pole / rpm	2 P / 2800 rpm		
Start Method	DOL		
Insulation Class	B		

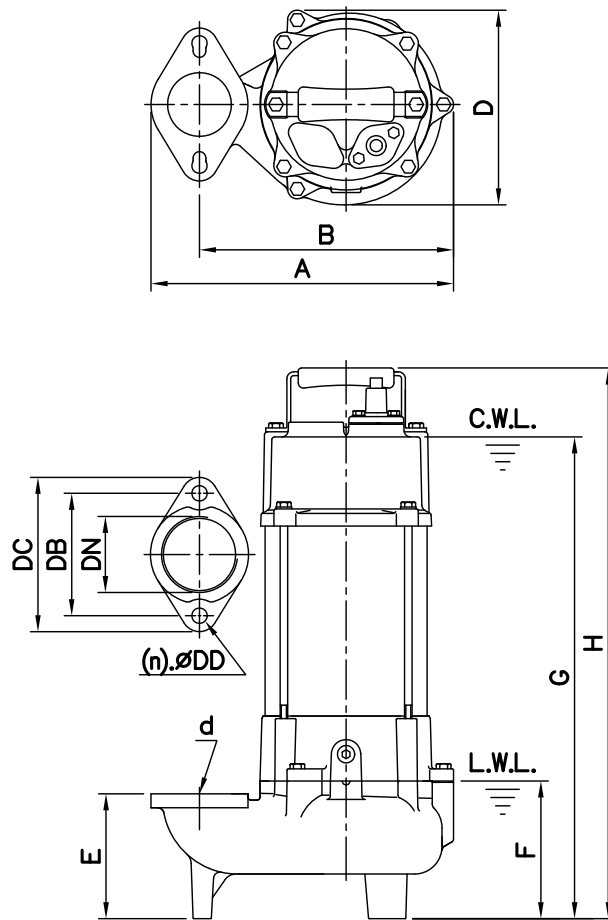


## DIMENSIONS

NO: S2SFU208A32-11

MODEL: 50SFU2.4A / 2.8A

1Ø / 3Ø



Flange	
Female Thread	
PF	NPT

Dimensions-mm

Weight:kg

Model	d	A	B	D	E	F	G	H	WT1	Elbow (Flange) Set	DN	DB	DC	DD	(n)QTY	WT2
50SFU2.4A 1Ø	50	237	199	153	98	108	378	432	15	ESF2-96K	50	96	121	12	2	1
50SFU2.4A 3Ø	50	237	199	153	98	108	378	432	14	ESF2-96K	50	96	121	12	2	1
50SFU2.8A 1Ø	50	237	199	153	98	108	378	432	16	ESF2-96K	50	96	121	12	2	1
50SFU2.8A 3Ø	50	237	199	153	98	108	378	432	15	ESF2-96K	50	96	121	12	2	1

Dimensions-inch

Weight:lb

Model	d	A	B	D	E	F	G	H	WT1	Elbow (Flange) Set	DN	DB	DC	DD	(n)QTY	WT2
50SFU2.4A 1Ø	2	9 <sup>5</sup> / <sub>16</sub>	7 <sup>13</sup> / <sub>16</sub>	6	3 <sup>7</sup> / <sub>8</sub>	4 <sup>1</sup> / <sub>4</sub>	14 <sup>7</sup> / <sub>8</sub>	17	33	ESF2-96K	2	3 <sup>3</sup> / <sub>4</sub>	4 <sup>3</sup> / <sub>4</sub>	1/2	2	1
50SFU2.4A 3Ø	2	9 <sup>5</sup> / <sub>16</sub>	7 <sup>13</sup> / <sub>16</sub>	6	3 <sup>7</sup> / <sub>8</sub>	4 <sup>1</sup> / <sub>4</sub>	14 <sup>7</sup> / <sub>8</sub>	17	31	ESF2-96K	2	3 <sup>3</sup> / <sub>4</sub>	4 <sup>3</sup> / <sub>4</sub>	1/2	2	1
50SFU2.8A 1Ø	2	9 <sup>5</sup> / <sub>16</sub>	7 <sup>13</sup> / <sub>16</sub>	6	3 <sup>7</sup> / <sub>8</sub>	4 <sup>1</sup> / <sub>4</sub>	14 <sup>7</sup> / <sub>8</sub>	17	35	ESF2-96K	2	3 <sup>3</sup> / <sub>4</sub>	4 <sup>3</sup> / <sub>4</sub>	1/2	2	1
50SFU2.8A 3Ø	2	9 <sup>5</sup> / <sub>16</sub>	7 <sup>13</sup> / <sub>16</sub>	6	3 <sup>7</sup> / <sub>8</sub>	4 <sup>1</sup> / <sub>4</sub>	14 <sup>7</sup> / <sub>8</sub>	17	33	ESF2-96K	2	3 <sup>3</sup> / <sub>4</sub>	4 <sup>3</sup> / <sub>4</sub>	1/2	2	1

C.W.L.:Continuous Running Water Level  
L.W.L.:Lowest Running Water Level

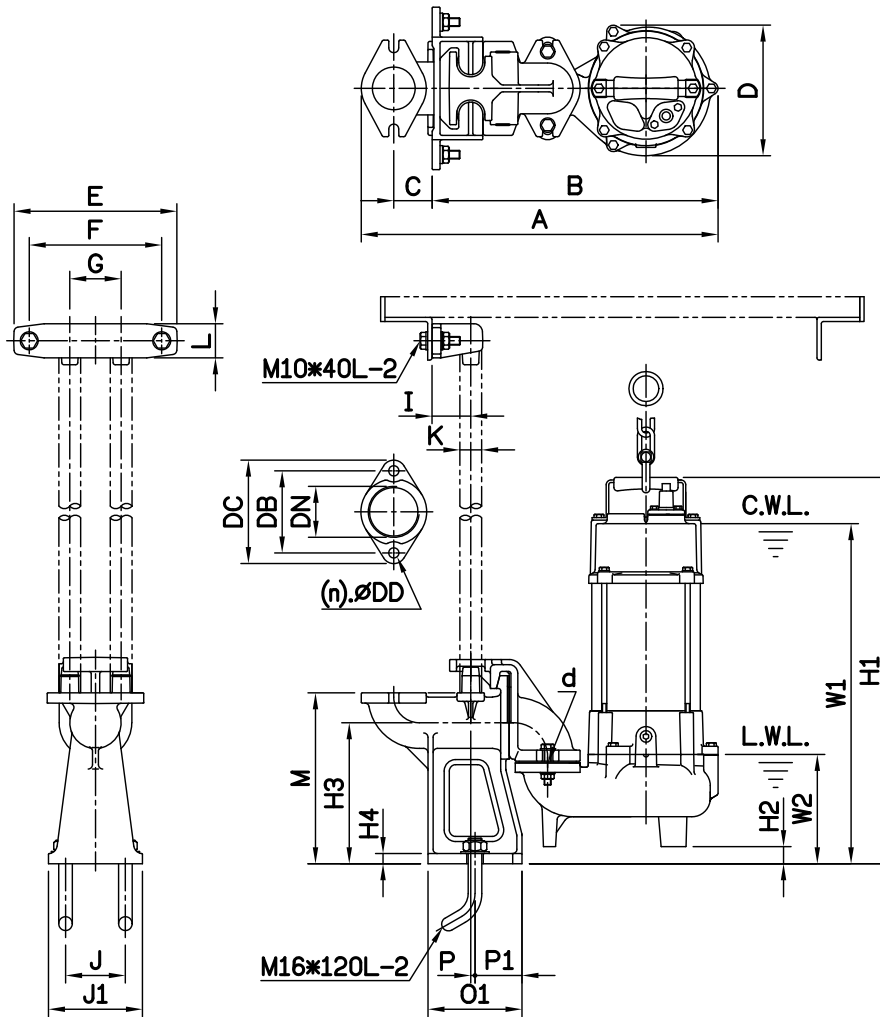
WT1:Pump Weight(Without Cable)  
WT2:Elbow Set Weight

## DIMENSIONS

NO: T2SFU208A32-11

MODEL: 50SFU2.4A / 2.8A

1Ø / 3Ø



Flange	
Female Thread	
PF	NPT

Dimensions-mm

Elbow (Flange)Set	DN	DB	DC	DD	(n)QTY
ESF2-96	50	96	121	12	2

Dimensions-inch

Elbow (Flange)Set	DN	DB	DC	DD	(n)QTY
ESF2-96	2	3¾	4¾	½	2

Dimensions-mm

Model	d	A	B	C	D	E	F	G	I	J	J1	K	L	M	O1	P	P1	W1	W2	H1	H2	H3	H4	WT1	GRS Set	WT2
50SFU2.4A 1Ø	50	417	334	45	153	190	155	60	45	70	110	¾"	40	200	110	5	55	398	128	452	20	165	12	15	ST2-50	9
50SFU2.8A 1Ø	50	417	334	45	153	190	155	60	45	70	110	¾"	40	200	110	5	55	398	128	452	20	165	12	16	ST2-50	9
50SFU2.4A 3Ø	50	417	334	45	153	190	155	60	45	70	110	¾"	40	200	110	5	55	398	128	452	20	165	12	14	ST2-50	9
50SFU2.8A 3Ø	50	417	334	45	153	190	155	60	45	70	110	¾"	40	200	110	5	55	398	128	452	20	165	12	15	ST2-50	9

Weight:kg

Dimensions-inch

Model	d	A	B	C	D	E	F	G	I	J	J1	K	L	M	O1	P	P1	W1	W2	H1	H2	H3	H4	WT1	GRS Set	WT2
50SFU2.4A 1Ø	2	16½	13½	1¾	6	7½	6¾	2¾	1¾	2¾	4½	¾	1½	7½	4½	¾	2½	15½	5½	17¾	1¾	6½	½	33	ST2-50	20
50SFU2.8A 1Ø	2	16½	13½	1¾	6	7½	6¾	2¾	1¾	2¾	4½	¾	1½	7½	4½	¾	2½	15½	5½	17¾	1¾	6½	½	35	ST2-50	20
50SFU2.4A 3Ø	2	16½	13½	1¾	6	7½	6¾	2¾	1¾	2¾	4½	¾	1½	7½	4½	¾	2½	15½	5½	17¾	1¾	6½	½	31	ST2-50	20
50SFU2.8A 3Ø	2	16½	13½	1¾	6	7½	6¾	2¾	1¾	2¾	4½	¾	1½	7½	4½	¾	2½	15½	5½	17¾	1¾	6½	½	33	ST2-50	20

Weight:lb

C.W.L.:Continuous Running Water Level  
L.W.L.:Lowest Running Water Level

WT1:Pump Weight(Without Cable)  
WT2:GRS Set Weight

