

HCP PUMP

Model	GD-1100
Series	GD
Frequency	50
Phase / Volt	1 Ø / 230 V
Rated Current	7.4 A
Discharge	50 mm (2")



Motor Data

Input Power—P1	1.55 kW
Rated Power—P2	1.1 kW
Insulation Class	F
Max. Starts Per Hour	10
Rated Speed (rpm)	2820
Start Method	CAPACITOR
Ingress Protection Code	IP68
Explosion-Proof	NO

Technology

Impeller Type	Open
Mechanical Seal	Double
Lubricating Oil VG32	380 CC
Solid Passage	7 mm (¼")
Cooling Type	Self-cooling

Material

Motor Frame	FC200 (GG-20)
Shaft	SUS403 (X5Cr13)
Casing	FCD500(GGG-50)
Impeller	Chrome Steel
Mechanical Seal	CA/CE&SiC/SiC
Cable	VCT,H07RN-F
Upper and Lower Bearing	6203ZZ,6304ZZ

Liquid

Maximum Ambient Temperature	0~40°C (32~104°F)
Maximum Installation Depth	20m (66ft)
Highest Liquid Temperature	40 °C (104°F)
Liquid Transported	Construction drainage

Others(Optional)

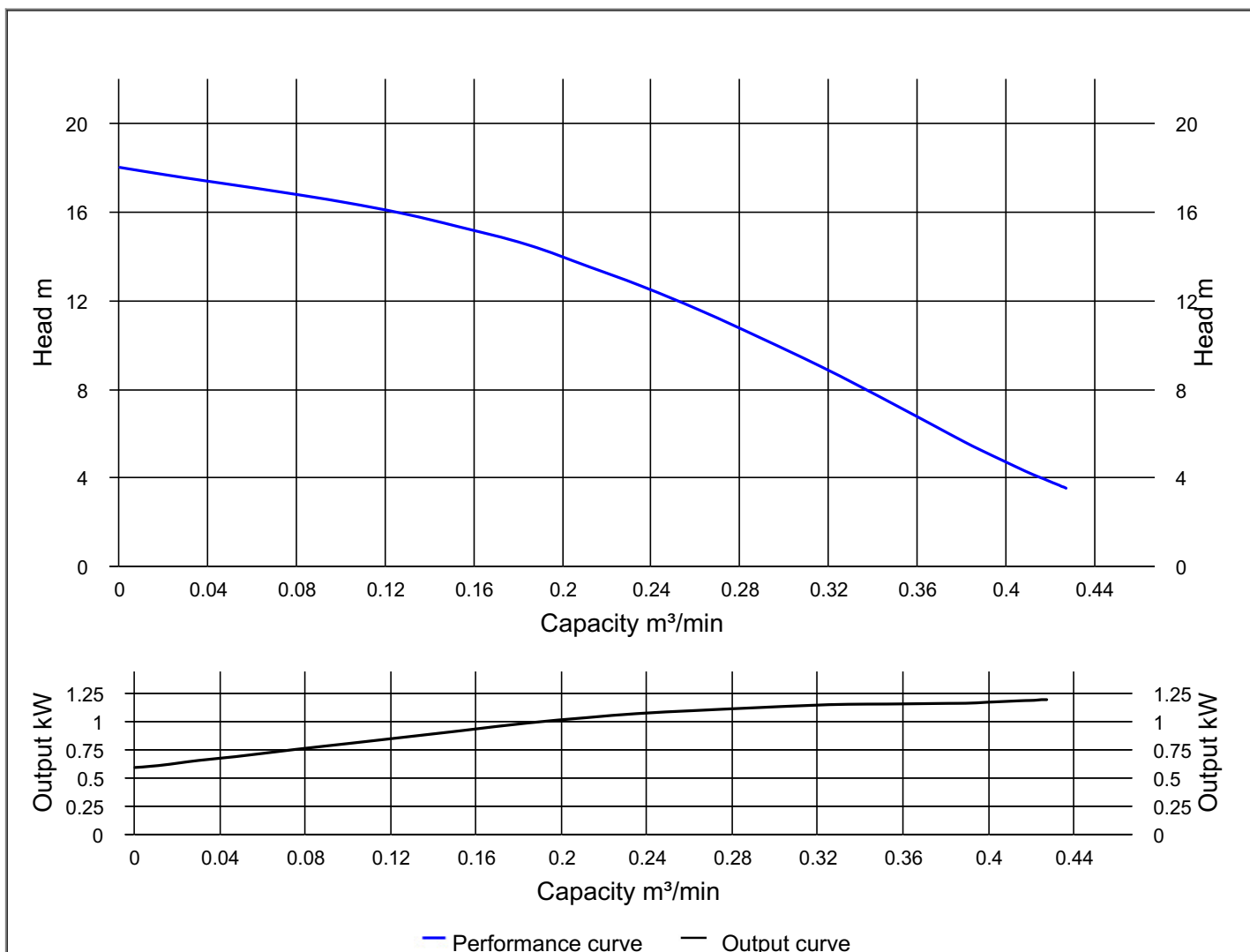
Protection Device	Auto-cut Protector
Moisture Sensor	



HCP PUMP

PUMP PERFORMANCE CURVES

Model	GD-1100	File NO.	20240703153457
Frequency	50 Hz	Ver NO.	202003060911
Discharge	2" / 50 mm	REFERENCE SPECIFICATION	
Power	1.5 HP / 1.1 kW	Output	1.02 kW
Std. Head	13.5 m	Efficiency	45 %
Std. Capacity	0.2 m ³ /min		
Phase / Volt	1 Ø / 230 V		
Rated Current	7.4 A		
Pole / rpm	2 P / 2820 rpm		
Start Method	CAPACITOR		
Insulation Class	F		

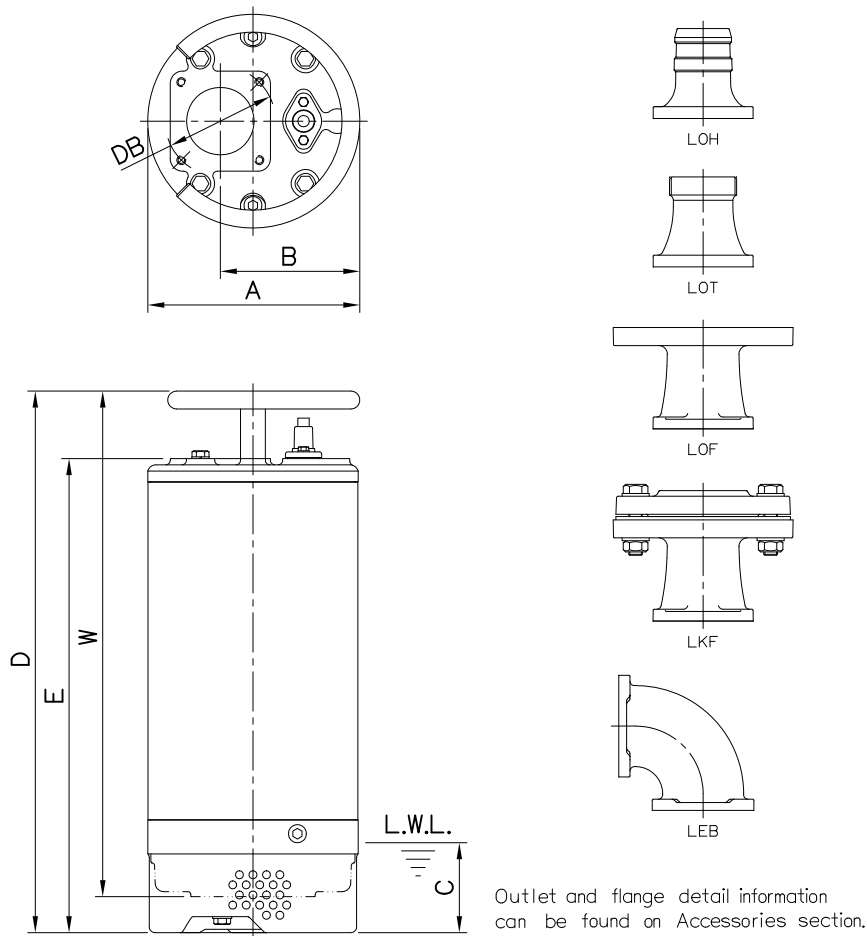


SECTIONAL VIEWS

NO: S2GD0211032-00

MODEL: GD-1100

1Ø / 3Ø



Dimensions—mm

Weight:kg

Model	A	B	C	D	E	W	DB	WT1	Optional Outlet Accessories				
									LOH	LOT	LOF	LKF	LEB
GD-1100 1Ø	189	124	80	482	422	450	98	33	LOH2-98	LOT2-98	LOF2-120-125*98	LKF2-120*98	LEBX-98
GD-1100 3Ø	189	124	80	422	362	390	98	28	LOH2-98	LOT2-98	LOF2-120-125*98	LKF2-120*98	LEBX-98

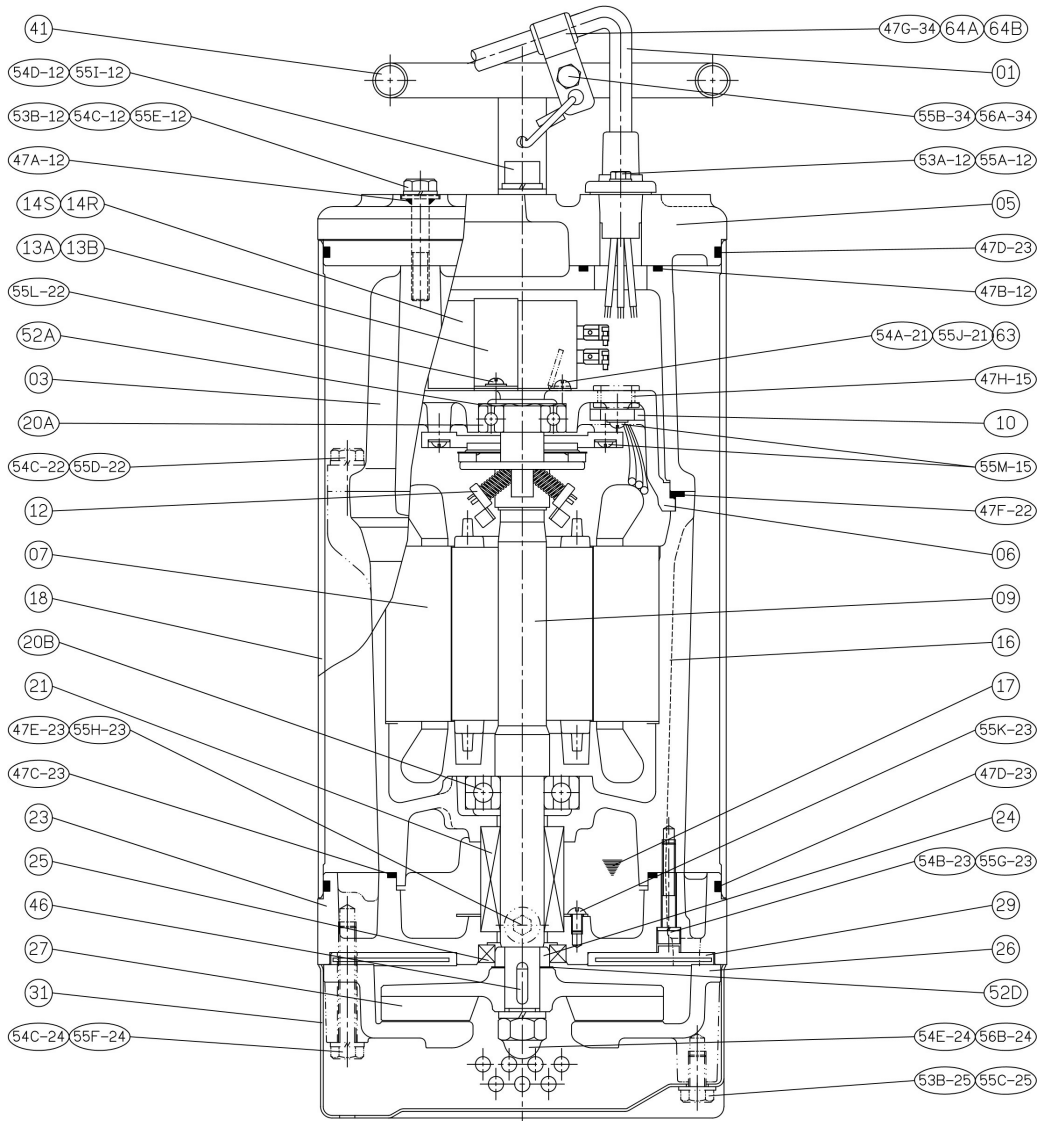
Dimensions—inch

Weight:lb

Model	A	B	C	D	E	W	DB	WT1	Optional Outlet Accessories				
									LOH	LOT	LOF	LKF	LEB
GD-1100 1Ø	7 ⁷ / ₁₆	4 ⁷ / ₈	3 ¹ / ₈	19	16 ⁵ / ₈	17 ¹ / ₈	3 ⁷ / ₈	73	LOH2-98	LOT2-98	LOF2-120-125*98	LKF2-120*98	LEBX-98
GD-1100 3Ø	7 ⁷ / ₁₆	4 ⁷ / ₈	3 ¹ / ₈	16 ⁵ / ₈	14 ¹ / ₄	15 ³ / ₈	3 ⁷ / ₈	62	LOH2-98	LOT2-98	LOF2-120-125*98	LKF2-120*98	LEBX-98

L.W.L.:Lowest Running Water Level

WT1:Pump Weight(Without Cable)
W is the dimension from handle to casing.



NO.	Part name	Material	QTY
01	Cable		1
03	Upper Cover	FC200	1
05	Outlet Disk	FC200	1
06	Bracket	FC200	1
07	Stator		1
09	Shaft End	SUS403	1
10	Auto-cut Protector		1
12	Centrifugal Switch		1
14R	Running Capacitor		1
14S	Start Capacitor		1
16	Motor Frame	FC200	1
17	Lubricant		
18	Outer Cover	SPCC	1
20A	Bearing		1

NO.	Part name	Material	QTY
20B	Bearing		1
21	M. Seal	CA/CE & SiC/SiC	1
23	M. Seal Bracket	FC200	1
24	Oil Seal Bush	SUS403	1
25	Oil Seal	SUS304+NBR	1
26	Casing	FCD500	1
27	Impeller	Chrome Steel	1
29	Wear plate	Synthetic Rubber(EPDM)+SPCC	1
31	Strainer	SUS304	1
41	Handle	SUS304	1
46	Impeller Key	SUS304	1
47	Gasket Kit		